

Bomanite®

Con-Color Standard Color Chart

TRANSLUCENT
STAINS FOR:

IMPRINT SYSTEMS

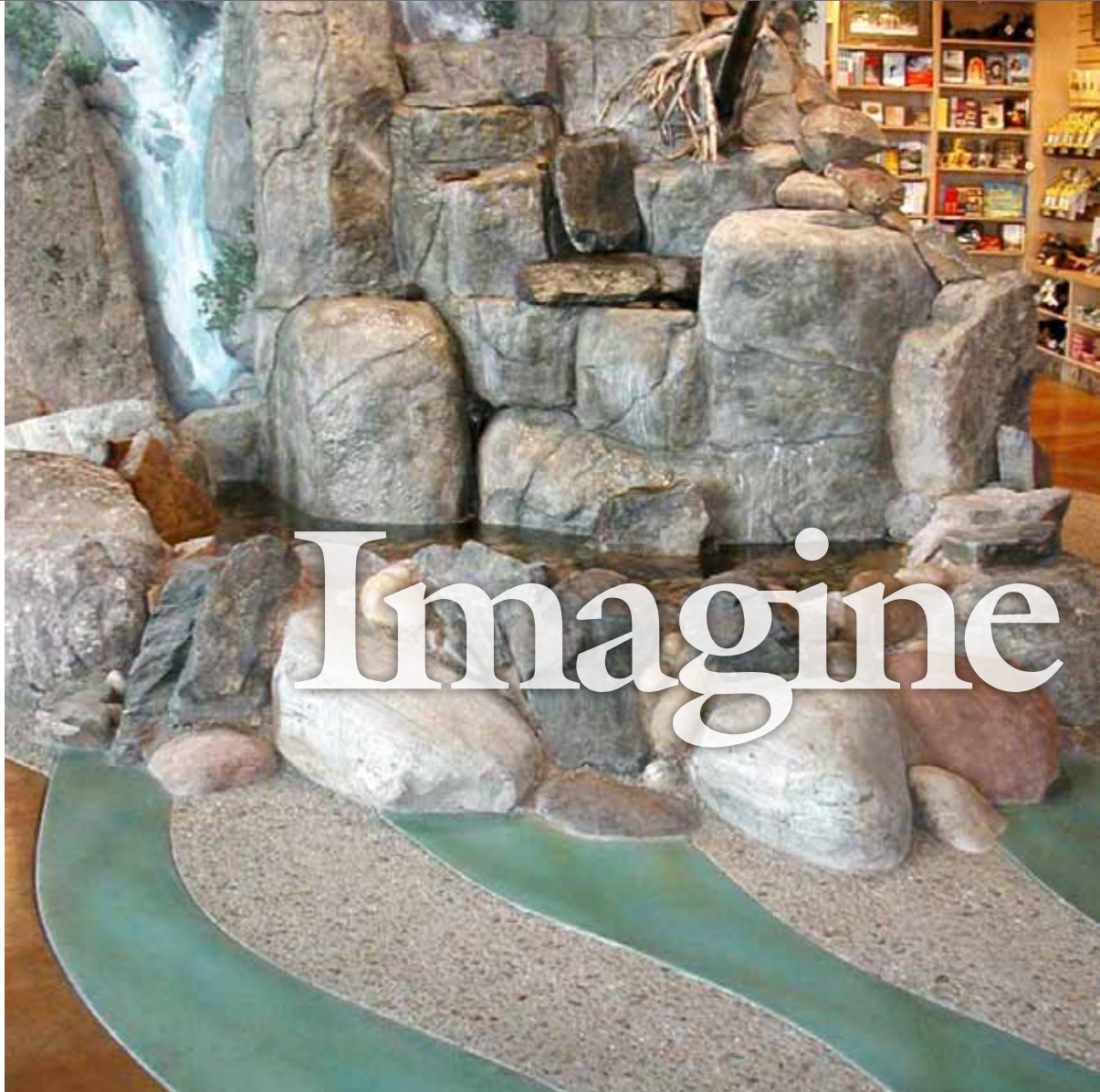
TOPPING SYSTEMS

CUSTOM POLISHING
SYSTEMS

EXPOSED AGGREGATE
SYSTEMS

PERVIOUS CONCRETE
SYSTEMS

COLOR TO
ENHANCE
YOUR
EVERYDAY
SPACES



Bomanite Con-Color Color Chart

STANDARDS (Applied To Uncolored Gray Concrete)



Natural Gray



Cream



Autumn Brown



Sand



Forest Brown



Mexican Tile



Franciscan Red



Boca Pink



Brick Red



Green



Nickel Gray



Sonora Tan



Caramel



Cobblestone Gray



Desert Tan

EXOTICS (Applied To Uncolored Gray Concrete)



Barberry



Garden Pond



Tawny Peach



Sea Moss



Autumn Orange



Royal Lilac



Old Rose



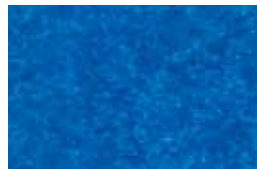
Harper Blue



Barn Red



Harvest Wheat



Cobalt Blue



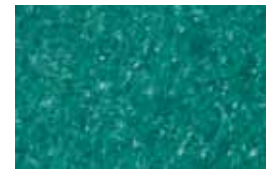
Deep Violet



Indigo Blue



Jet Black



Park Green

IMPORTANT NOTES:

Some colors may be more sensitive to UV exposure than others. Consult your local Bomanite Licensed Contractor or Bomanite Technical Services prior to selection of any questionable colors such as bright shades or custom colors.

When Bomanite Con-Color is applied to traditional concrete or any portland cement-based product the resulting color can be influenced by a range of factors. Age of substrate, cement color and content, moisture content, the presence of polymers or other admixtures, pozzolans such as fly ash or similar, the method of application, finishing techniques, mix designs, curing practices, condition of substrate, surface preparation, substrate porosity and the sealer selected along with other factors will all affect the final appearance. It is required that hard troweled or previously sealed surfaces be mechanically prepared by grinding prior to staining.

It is highly recommended that samples be created, viewed and approved using construction techniques and materials identical to those that will be used in the actual construction of the project. This sampling process must be completed prior to specifying the final color and appearance.

Your authorized Bomanite Licensed Contractor is:

Bomanite®

The Bomanite Company
8789 Auburn Folsom Rd. #108
Granite Bay, CA 95746
(303) 369-1115 Fax: (303) 291-0282
www.bomanite.com

©2011 The Bomanite Company. Bomanite® is a registered trademark and servicemark with the U.S. Patent Office and other countries. WEB0711

Chart 400.15